

Photometric Report

MAC Aura XIP – Medium

MARTIN PROFESSIONAL R&D OPTICAL LABORATORY

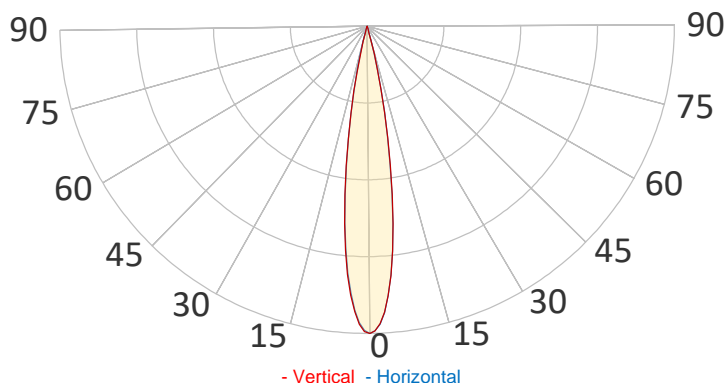
GENERAL SPECIFICATIONS

Total Fixture Output:	6000 lm
Light Engine Output:	11klm
Efficacy:	21 lm/W
Lens Option:	N/A
Beam Angle (50%):	6,3-35,3°
Field Angle (10%):	8,8-50,4°
Cut-off Angle (3%):	10,4-58,7°
CRI:	71
CQS:	80
TM-30 Rf:	78
TM-30 Rg:	117
TLCI:	57
Color Temperature:	6500 K



SAMPLE MEASUREMENT

POLAR PLOT

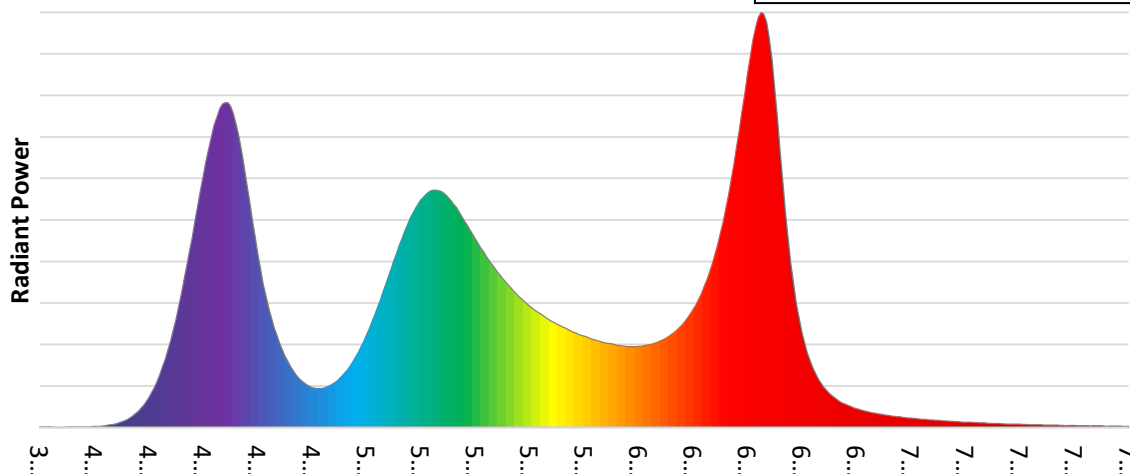


Catalog Number:	MAR-90250100HU
Measured Output:	5488 lm
Measured Peak:	64198 cd
Consumed Power:	282 W
Efficacy:	19,5 lm/W

Beam Angle (50%):	17,1°
Field Angle (10%):	27,8°
Cut-off Angle (3%):	31,8°

Measurement Condition:	
Ambient Temperature:	25° +/- 5° C
AC Supply:	230V/50Hz
Fan Mode:	Constant Fan Full
Fixture Warm-up Time:	30 minutes

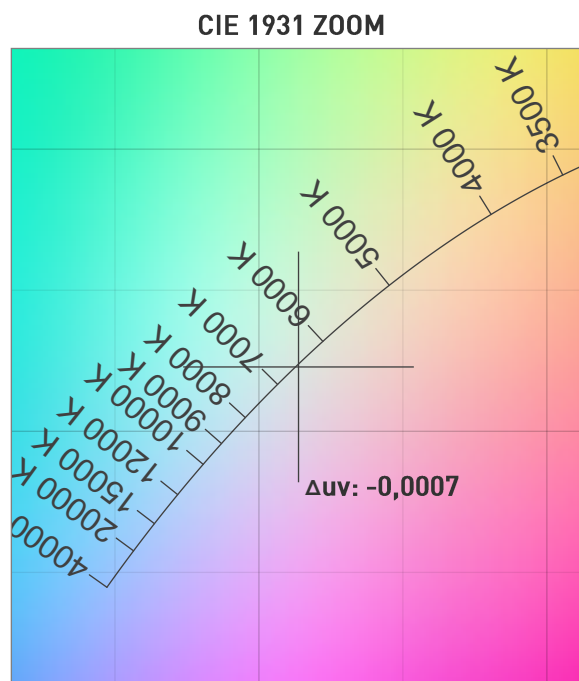
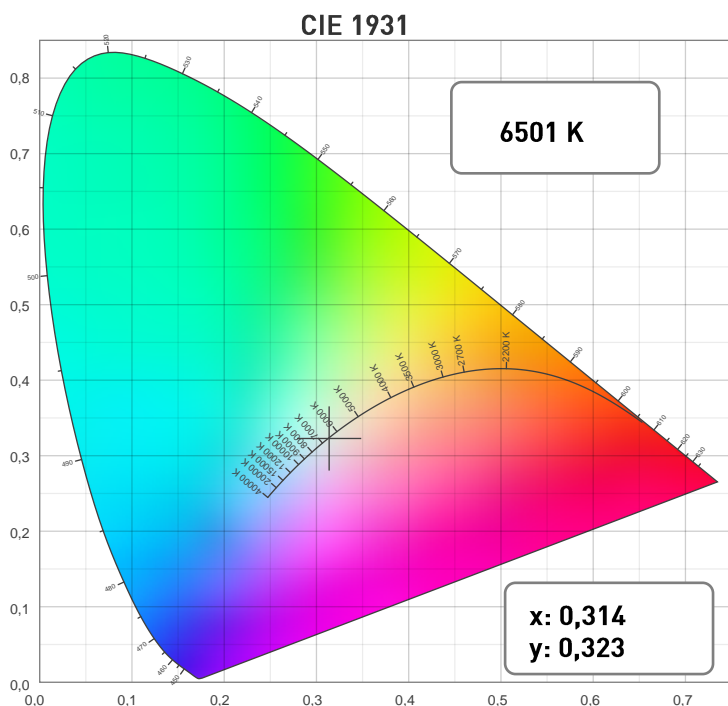
SPECTRAL DISTRIBUTION



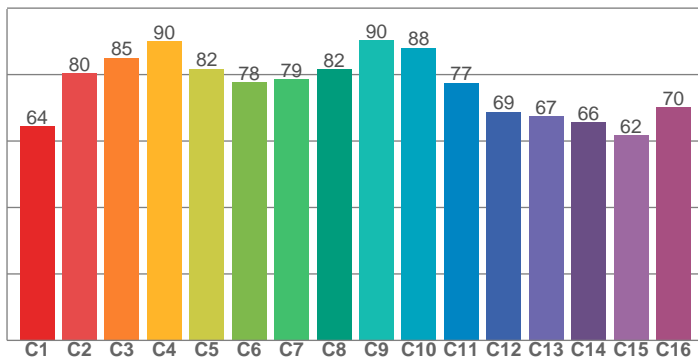
Photometric Report

MAC Aura XIP – Medium

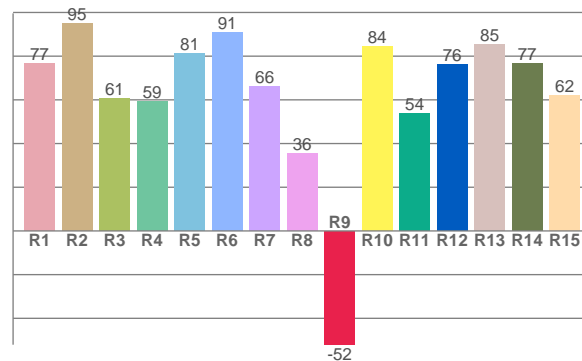
CHROMATICITY



TM30: 77,9



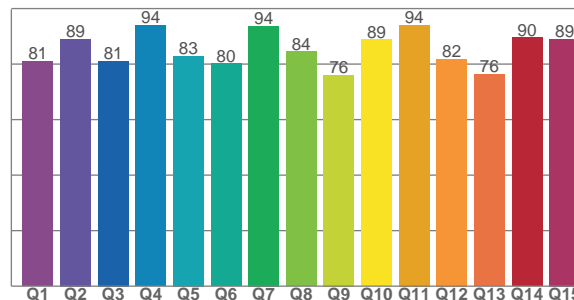
CRI: 70,7 (R1-R8)



COLOR PARAMETERS

Color Temperature	Color Rendering Index	Red Component	Color Fidelity	Color Gamut
CCT	CRI	CRI R9	TM30 Rf	TM30 Rg
6501 K	70,7	-52,1	77,9	117,3

CQS: 84,3



Television Lighting Consistency Index	Color Quality Scale	Color Coordinate CIE 1931	Color Coordinate CIE 1931	Color Coordinate CIE 1964	Color Coordinate CIE 1964	Color Deviation from Black Body
TLCI	CQS	x	y	u	v	Δuv
57	84,3	0,314	0,323	0,201	0,310	-0,0007

Photometric Report

MAC Aura XIP – Medium

TM30

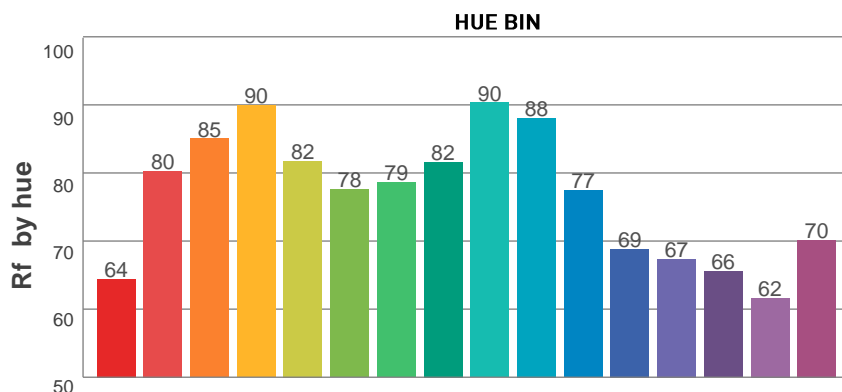
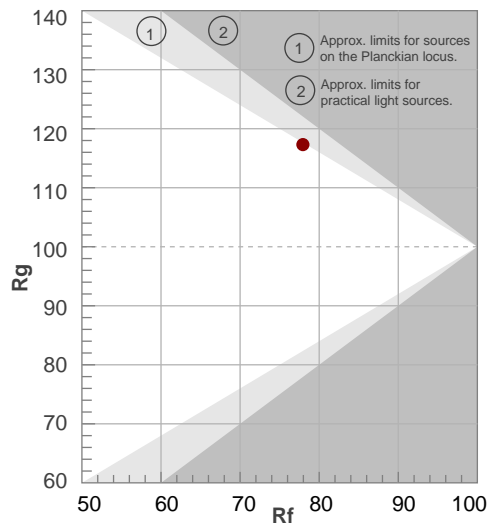
Rf 77,9

Fidelity index Rf

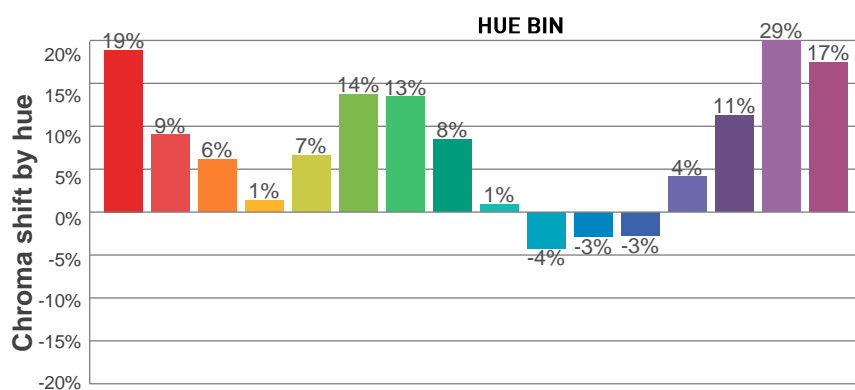
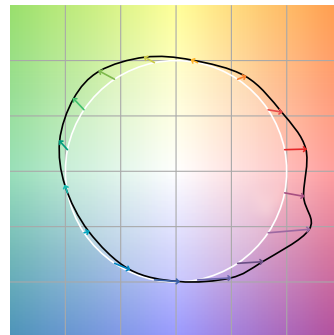
Rg 117,3

Gamut index Rg

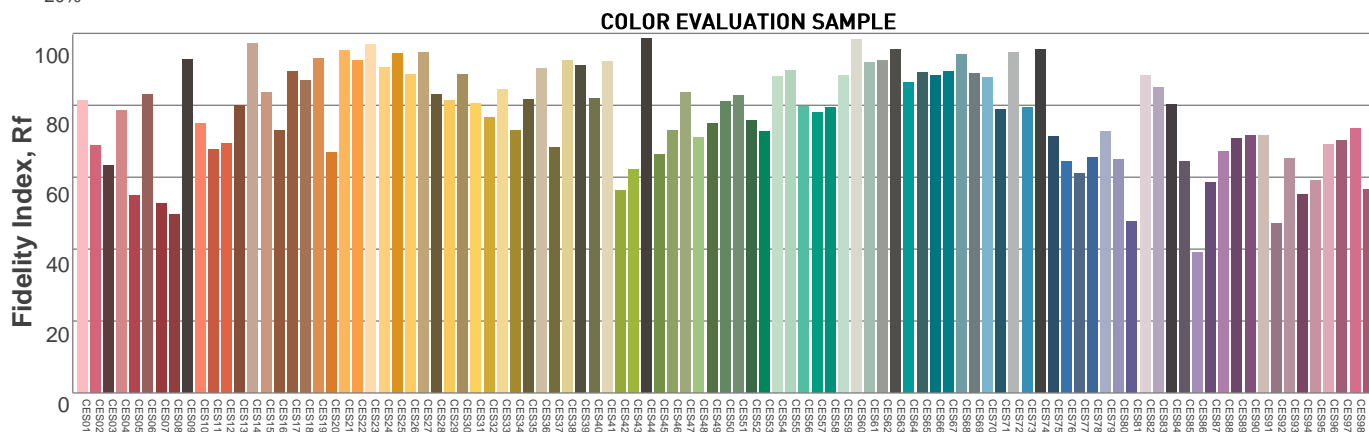
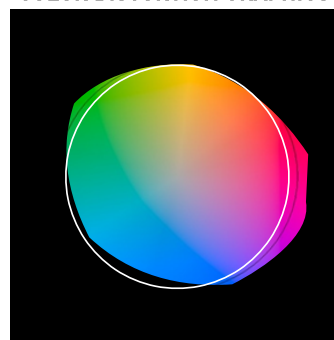
Hue Bin	R _f	Graphic shifts (%)	
		Chroma	Hue
1	64	19%	-3%
2	80	9%	-9%
3	85	6%	-4%
4	90	1%	6%
5	82	7%	8%
6	78	14%	7%
7	79	13%	-3%
8	82	8%	-6%
9	90	1%	-7%
10	88	-4%	1%
11	77	-3%	14%
12	69	-3%	22%
13	67	4%	29%
14	66	11%	19%
15	62	29%	23%
16	70	17%	0%



COLOR VECTOR GRAPHICS



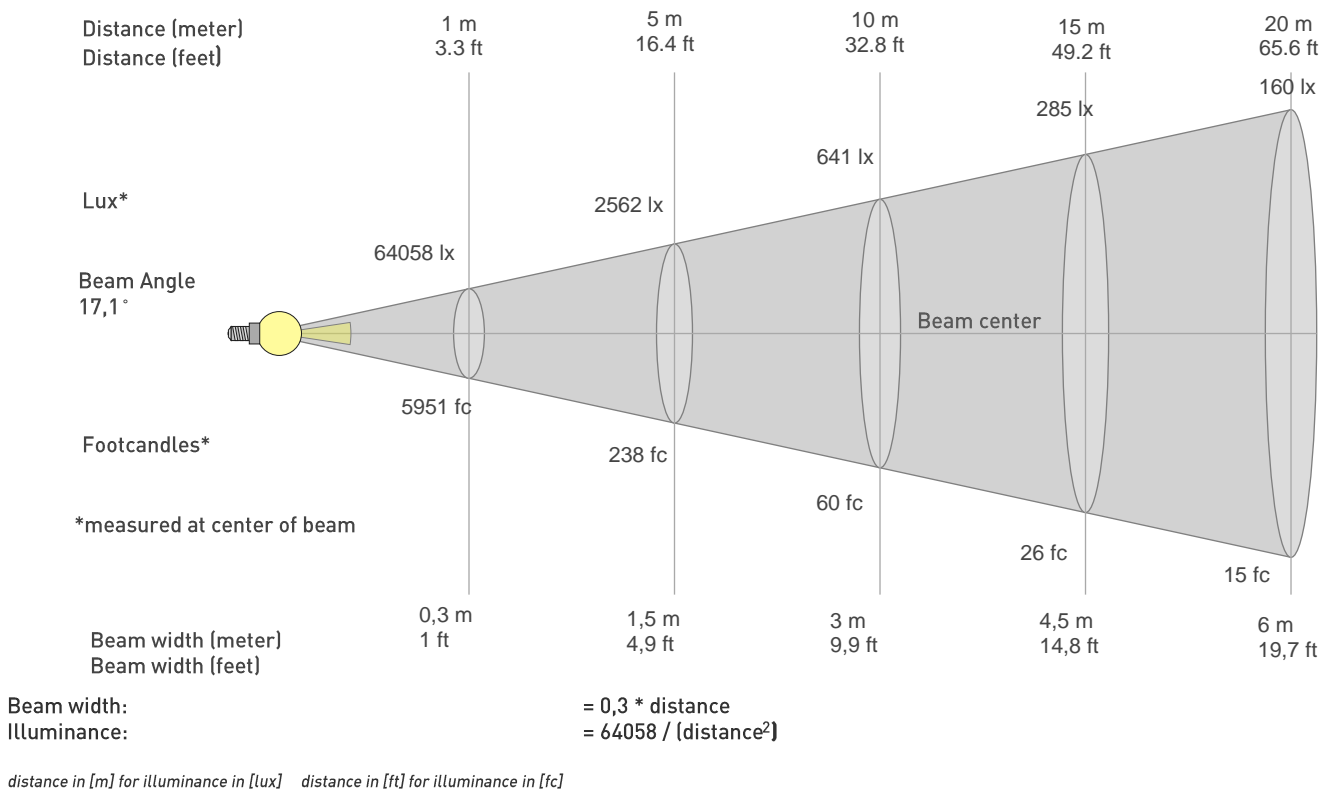
COLOR DISTORTION GRAPHICS



Photometric Report

MAC Aura XIP – Medium

BEAM DETAILS



BEAM ILLUMINANCE FROM 1-20M

1m	2m	3m	4m	5m	6m	7m	8m	9m	10m	11m	12m	13m	14m	15m	16m	17m	18m	19m	20m
3,3ft	6,6ft	9,8ft	13,1ft	16,4ft	19,7ft	23ft	26,2ft	29,5ft	32,8ft	36,1ft	39,4ft	42,7ft	45,9ft	49,2ft	52,5ft	55,8ft	59,1ft	62,3ft	65,6ft
64058lx	16014lx	7118lx	4004lx	2562lx	1779lx	1307lx	1001lx	791lx	641lx	529lx	445lx	379lx	327lx	285lx	250lx	222lx	198lx	177lx	160lx
5951,1fc	1487,8fc	661,2fc	371,9fc	238fc	165,3fc	121,5fc	93fc	73,5fc	59,5fc	49,2fc	41,3fc	35,2fc	30,4fc	26,4fc	23,2fc	20,6fc	18,4fc	16,5fc	14,9fc

